



Model No. : OEM-UB02/UD15



Product Introduction

PES material, transparent protecting cover, easily to observe the working situation of pump head and tubing at any time. Various of colors are available. There is water-proof groove in the pump head mounting side. Can use stepper motor, DC motor, AC motor and so on to drive.

Typical Application

Widely used in industrial washing machines, dishwashers, fermentation tanks, analytical instruments supporting.

Flow Data

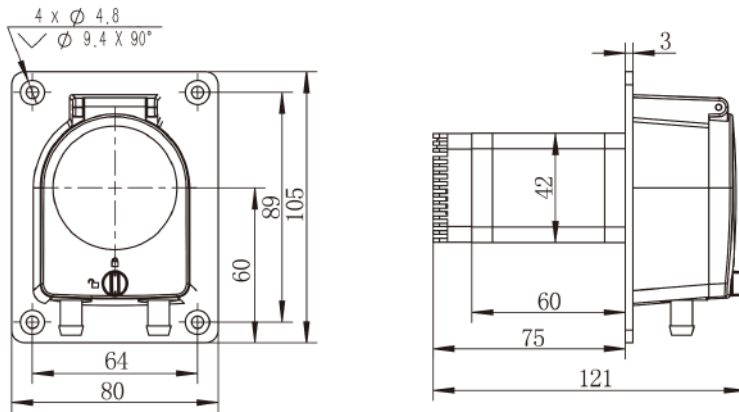
| Pump Head | Housing Material | | Tubing | | Speed Range(rpm) | Flow Rate (mL/min) | Weight (kg) |
|-----------|------------------|------------------|--------------|-------------------|------------------|--------------------|-------------|
| | Body | Protective cover | Tubing Sizes | ID×Wall Thickness | | | |
| UD15 | PSF | Transparent PC | 16# | 3.1×1.6 | 0.1-350 | 0.08-280 | 0.12 |
| | | | 25# | 4.8×1.6 | | 0.16-580 | |
| | | | 17# | 6.4×1.6 | | 0.26-930 | |

Motor Specification

| | |
|----------------------|--|
| Model No. | OEM-UB02 OEM-UB016 |
| Speed range | 0.1-350 rpm |
| Flow rate range | 0.08-930mL/min |
| Speed control | OEM-B02: Preset speed or serial port control |
| | OEM-B016: Adjust speed by internal potentiometer |
| Motor type | 42 stepper motor |
| Power supply | DC 24V, ≥36W |
| Working environment | 0-40°C, 80%RH |
| Model No. | OEM-UB09 OEM-UB10 |
| Speed range | 0.1-350 rpm |
| Flow rate range | 0.08-930mL/min |
| Speed control | External input pulse frequency speed control |
| Subdivision settings | 1/16(recommend), 1, 1/2, 1/4, 1/8, 1/32, 1/64, 1/128 |
| Motor type | 42 stepper motor |
| Power supply | DC 24V, ≥36W |
| Working environment | 0-40°C, 80%RH |



Dimension Drawing (Unit:mm)



Tubing Installation Procedure



A. As below picture,turn the holding pin to unlocking position.

B. Open the transparent cover.

C. Install the tubing.

D. Close the transparent cover, and turn the holding pin to locking position.